

Polywater® InstaGrout™

Sealant Barrier for Transformer Pad Openings

Polywater® InstaGrout™ Sealant, based on advanced Polymer Matrix Technology (PMT), creates a strong, resilient barrier to protect transformer pads, J-Boxes, DOT control cabinets, and other protective enclosures. InstaGrout™ creates a resilient, impermeable barrier in enclosure base openings to help prevent service disruptions and safety hazards. The hardened, lightweight InstaGrout™ seal safeguards expensive equipment and cabling from damage by pests such as rodents, snakes, spiders, wasps, and fire ants.

InstaGrout™ is easy to apply. Its self-leveling flow allows it to seal around stub-ups and expand into hard to reach areas under heavy equipment or cables. The hardened PMT base creates a strong cross-linked matrix that will not crumble or collapse. InstaGrout™ is a sturdy and economical alternative to concrete grout and; it doesn't need water.



- Safeguard enclosures, equipment and cables from damage
- Prevent animal intrusions into protective enclosures
- Economical, robust alternative to concrete grout
- Protect hard to access areas and equipment
- Easy to mix and apply; no water required
- Compatible with all cable jacket materials
- Withstands temperature extremes

Before...



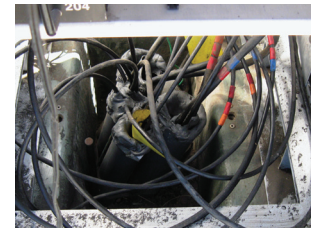
Massive earthen build-up in the transformer



Sticks brought into transformer through visible rodent hole next to conduit

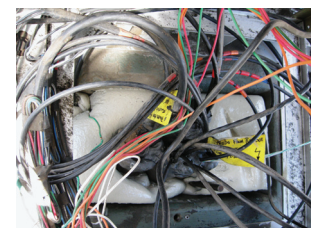
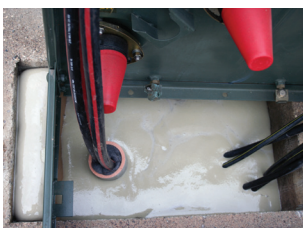


Close-up of rat bite marks on elbows



DOT traffic cabinet

After



Polywater® InstaGrout™ Sealant Barrier makes sealing pad and pedestal openings simple.

Polywater® InstaGrout™

Polywater® InstaGrout™ Sealant is a two-part system packaged in pre-measured quantities for easy, on-site mixing. The repair compound flows and expands around complex conduit stub-ups. It adheres to metals, plastics, wood, and concrete. InstaGrout™ self-levels and covers uneven dirt and sand base material. The result is a continuous barrier created from a convenient liquid system. It naturally expands to a thickness of 3 to 4 inches. Kit coverage is calculated using a 3-inch fill depth (7,60 cm). Working temperature range is from 40° F to 110° F (5° C to 43° C).

Carefully measure the area to be sealed by multiplying the width (in feet) by the length (in feet)* of the opening pad in the structure. Do not subtract any conduits or other stub-up utilities. Use this measurement to estimate the minimum quantity required. Round up to determine quantity of InstaGrout™ Sealant required. It is good practice to rely on field measurements to calculate quantity, rather than measurements from plans or specs. Actual pad opening dimensions may vary from drawings due to manufacturing variances or earlier pad change-outs.

Example: Pull box measuring 15 inches (38 cm) by 36 inches (91, 5 cm).

- Pull box area is 3.75 ft. (3.477 cm).
- Seal requires one PMT-3 KIT and one PMT-1 KIT to cover 4 ft.2 at 3-inch depth (3.700 cm2 at 7, 6 depth). The additional PMT-1 will fill any holes or gaps left after the application of the PMT-3 Kit.

*1 foot = 30,5 cm

Catalog No.	Area Covered	Volume Filled
PMT-1	1 ft² at 3-in. depth (929 cm² at 7,60 cm depth)	0.25 ft³ (7.079 cm³)
PMT-3	3 ft² at 3-in. depth (2.787 cm² at 7,60 cm depth)	0.75 ft³ (21.237 cm³)
PMT-10	10 ft² at 3-in. depth (9.290 cm² at 7,60 cm depth)	2.50 ft³ (70.792 cm³)

Catalog No.	Description	Standard Package
PMT-1	This kit will cover 1 square foot (approx.) with a 3-inch depth. Contains: 1 Bottle Part A, 1 Bottle Part B, 1 Pair Gloves, 1Instruction Sheet	2/Case
PMT-3	This kit will cover 3 square feet (approx.) with a 3-inch depth. Contains: 1 Bottle Part A, 1 Bottle Part B, 1 Pair Gloves, 1 Mixing Pail,1 Mixing Stick, 1 Instruction Sheet	1 Each
PMT-10	This kit will cover 10 square feet (approx.) with a 3-inch depth. Contains: 1 Jug of Part A, 1 Jug of Part B, 1 Pair Gloves, 1 Mixing Pail, 1 Instruction sheet. (recommend using paint mixer with drill to mix product thoroughly)	1 Each

www.polywater.com/instagrout.asp

Copyright ©2001-2012. American Polywater Corporation. All Rights Reserved

Important Notice: The statements here are made in good faith based on tests and observations we believe to be reliable. However, the completeness and accuracy of the information is not guaranteed. Before using, the end-user should conduct whatever evaluations are necessary to determine that the product is suitable for the intended use.

American Polywater expressly disclaims any implied warranties and conditions of merchantability and fitness for a particular purpose. American Polywater's only obligation shall be to replace such quantity of the product proven to be defective. Except for the replacement remedy, American Polywater shall not be liable for any loss, injury, or direct, indirect, or consequential damages resulting from product's use, regardless of the legal theory asserted.

American
Polywater®
Corporation

custserv@polywater.com (e-mail)
<http://www.polywater.com> (URL)

P.O. Box 53
Stillwater, MN 55082
U.S.A
1-800-328-9384
1-651-430-2270
fax 1-651-430-3634