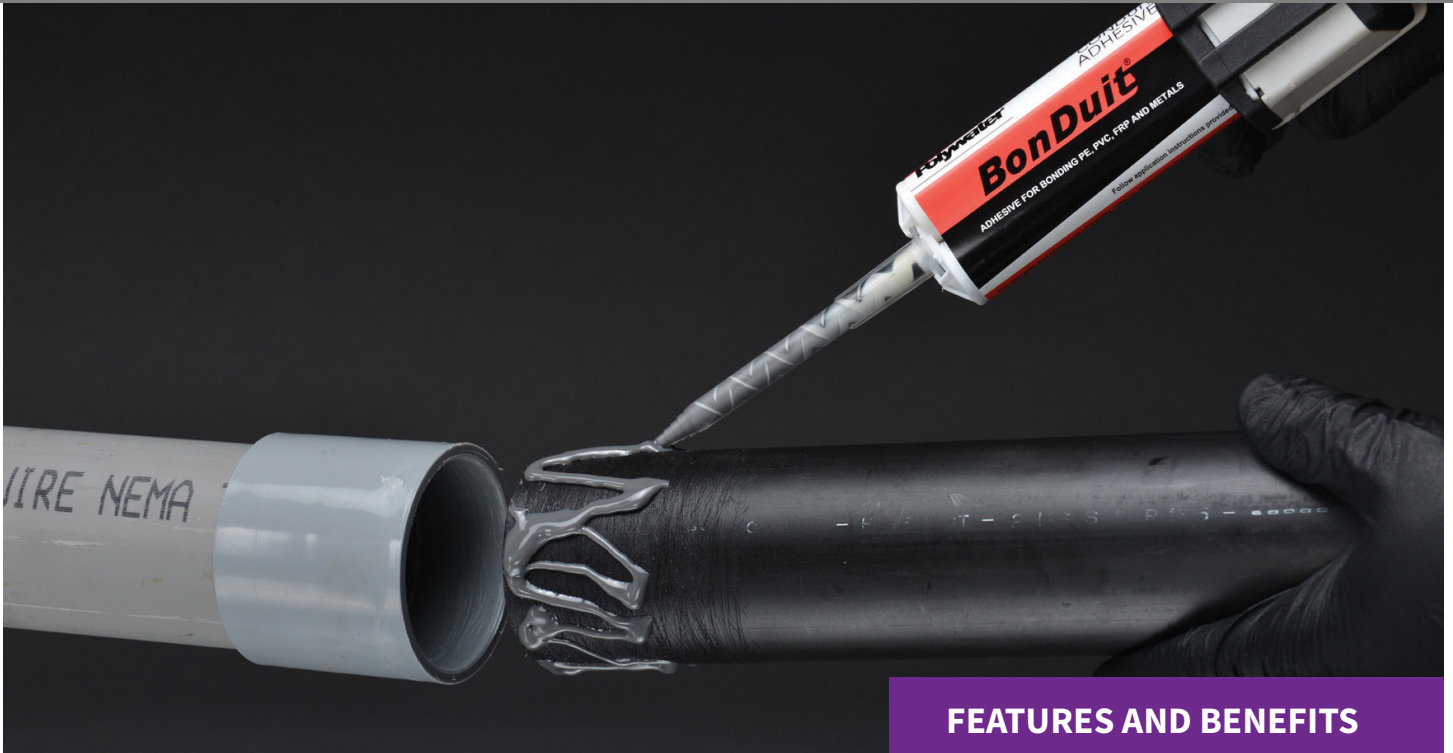


Polywater®

BonDuit®



CONDUIT ADHESIVE



Creates Strong, Watertight and Airtight Bonds with HDPE and Fiberglass Conduit

Polywater® BonDuit® joins polyethylene duct (PE pipe) to PVC, fiberglass, or metal conduits. It is a superior, easy-to-apply alternative to joining conduits with mechanical couplings. The rapid-cure, two-part resin adhesive forms a strong watertight and airtight seal and delivers a durable bond that can withstand movement and vibration. Ideal for installation along roadsides or near electrical equipment like transformers or switchgear.





BonDuit and Bonduit XL are UL recognized and was tested to UL Standard 746C.



FEATURES AND BENEFITS

- **VERSATILE**
Bonds HDPE to PVC, rigid steel, fiberglass conduits and fittings, and transition couplings
- **SUPERIOR**
Stronger pullout strength than most mechanical couplings
- **COST EFFECTIVE**
Less expensive than mechanical couplings
- **CONVENIENT**
Kits contain all application components required for a quick installation
- **UL RECOGNIZED**
Helps meet the NEC code regarding PE conduit installations

polywater.com | +1 651-430-2270

	CATALOG #	PACKAGE DESCRIPTION	UNITS/CASE
	BT-KIT	Kit Includes: 2 – 50 ml Adhesive Cartridges; 8 – Mixing Nozzles; 1 – Strip Sanding Cloth; 8 – Type RP™ Cleaning Wipes (cat# RP-1)	1
	BT-KITB6	1 Box with 6 BT-KIT	1
	BT-CART12PK	12 – 50 ml Adhesive Cartridges; 36 – Mixing Nozzles	1
	TOOL-50-11	1 – Dispensing Tool	1
	MXR-12T-10	10-Pack Mixing Nozzles	1
	BTXL-250KIT1	1 – 250 ml Adhesive Cartridge; 5 – Mixing Nozzles; 5 – Type RP Cleaning Wipes (cat# RP-1L); 5 – Pairs of Gloves; 1 – Strip Sanding Cloth; 1 – Instruction Sheet	1
	BTXL-250KITB6	6-BTXL-250KIT1	1
	BTXL-250CART12	12 – 250 ml Adhesive Cartridges; 12 – Mixing Nozzles; 12 – Pairs of Gloves; 1 – Strip Sanding Cloth; 1 – Instruction Sheet	1
	MXR-25B-10	10-Pack Mixing Nozzles	1
	TOOL-250	1 – High-ratio Caulking Tool	1



SPECIFICATIONS AND APPLICATIONS

- Available in two types:** BonDuit and BonDuit® XL. BonDuit XL is an excellent option for 3-inch (75 mm) conduits and larger. It helps meet the NEC code for transitioning above ground and to PVC or galvanized rigid steel. BonDuit XL can also be used as a mechanical coupling for conduit diameters higher than 5 inches (125 mm). Both types can be used for indoor and outdoor projects.
- Compliance:** BonDuit and BonDuit XL are UL recognized adhesives. Both pass testing under UL Standard 746C, “Polymeric Adhesive System for Indoor and Outdoor Use with Electrical Equipment. Meets NEC 352.48, 353.48, and 355.48 for joining PVC, HDPE Polyethylene, and RTRC fiberglass conduit. Both are the perfect choice for transition from underground HDPE pipe to aboveground connections. PVC pipe cement does not bond HDPE (NEC code 353.12.1).



Polywater BonDuit Adhesive Quantity Calculator

Determine the number of adhesive cartridges needed based on the number of connections and the conduit size.

CALCULATE QUANTITY



polywater.com | +1 651-430-2270

IMPORTANT NOTICE: The statements here are made in good faith based on tests and observations we believe to be reliable. However, the completeness and accuracy of the information is not guaranteed. Before using, the end-user should conduct whatever evaluations are necessary to determine that the product is suitable for the intended use.

American Polywater expressly disclaims any implied warranties and conditions of merchantability and fitness for a particular purpose. American Polywater’s only obligation shall be to replace such quantity of the product proven to be defective. Except for the replacement remedy, American Polywater shall not be liable for any loss, injury, or direct, indirect, or consequential damages resulting from a product’s use, regardless of the legal theory asserted.

© 2022 American Polywater Corporation LIT-BONDUITFLYER/REV000

Polywater®
Solutions at work.

American Polywater Corporation
11222 60th Street N.
Stillwater, MN 55082 USA

+1 651-430-2270 Main
+31 10 233 0578 Europe, Middle East, N. Africa
email: support@polywater.com